



SMART CITIES INFRASTRUCTURE

Smart Transport – Smart Mobility – Smart Streets

Transforming cities by creating a more sustainable and value-adding state of mobility



A pioneering technology and manufacturing company





Smart Cities Products For Intelligent Mobility

A Smart City is one that has digital technology embedded across all city functions to provide quality of life and a clean and liveable environment to live smarter.

Trueform's pioneering technology division, 'Trueform Digital', continues to drive the Intelligent Mobility revolution globally with further technological advances to its range of ultra-intelligent transport and wayfinding products.

Trueform's range of people centred, smart, sustainable and safe travel solutions harness emerging technologies, enabling the smarter, greener and more efficient movement of people around the world.

Intelligent Mobility is about taking a very different approach to the challenges that have traditionally beset the transport sector, whether it be congestion, pollution or the lack of joined up interface between different modes of transport.

Trueform is helping transit agencies and cities globally by transforming public transport hardware in urban environments into highly intelligent, ultra-connected smart communications infrastructure, applications and networks.

Intelligent Mobility is the future of transport. Our SmartCities product developments harness innovation and emerging technologies to create more integrated, efficient and sustainable public transport systems.

It marks an exciting coalition between traditional transport systems and our ultra-technology and communication products and services that can exploit vast amounts of available multi-layered data.

It offers us unprecedented opportunities to make much more efficient use of networks and to revolutionise public transport.

Benefits of a Smart City



Enhanced Liveability

In a smart city, people can enjoy comfortable, clean, engaged, healthy and safe mobility because they have several interconnected transportation options to choose from. People regard an efficient, convenient and reliable transportation and mobility network as one of the most highly valued features of a city. Among other things, it helps ensure faster emergency responses, cleaner air, and convenient ways to reach workplaces, schools, shopping, entertainment, cultural venues and other destinations.



Enhanced Workability

People are entitled to the services and support that will allow them to succeed in a global economy. A smart transportation network provides citizens and visitors with convenient, affordable and reliable ways for getting to and from where they work and it expands employment options — and that applies to all citizens. Truly smart transportation networks are inclusive and able to provide access to employment opportunities for low-income and marginalized segments of the population they might not otherwise have. Efficient transportation also enhances a city's economic competitiveness. Businesses considering where to locate and re-locate are going to evaluate a city's transportation network carefully because their operations and their employees will depend on it.



Enhanced Sustainability

A smart transportation network is clean and efficient. Reduced traffic congestion results in cleaner air, less wasted time and reduced energy consumption. Sufficiently attractive, convenient and efficient public transport options entice people to leave their cars at home more often. Cities that are working to accommodate electric and, eventually, autonomous connected vehicles can expect to realize even greater environmental benefits.



Improving Mobility, Health & Quality of Life in Towns and Cities

Towns and cities throughout the world are using Trueform's range of urban infrastructure to help transform their cities. Trueform's products facilitate and encourage low carbon mobility and active travel, whilst improving public health, air quality and quality of life.

With significant health and environmental benefits, Trueform's Smart Mobility, and Active Travel products encourage walking, cycling and public transport usage, reducing congestion, greenhouse gas emissions, air pollution, creating cleaner towns and cities, and cleaner air!

Since formation in 1977, Trueform has established itself as the market leader in the provision of clean-tech, green energy on-street public elements and infrastructure for commuters, travellers and the public.

Trueform has equipped many of the world's largest and most progressive towns and cities with pedestrian wayfinding, cycling, e-mobility, autonomous vehicle, bus, rail, bus rapid transit and air passenger transport infrastructure.



Key Features of Trueform Products

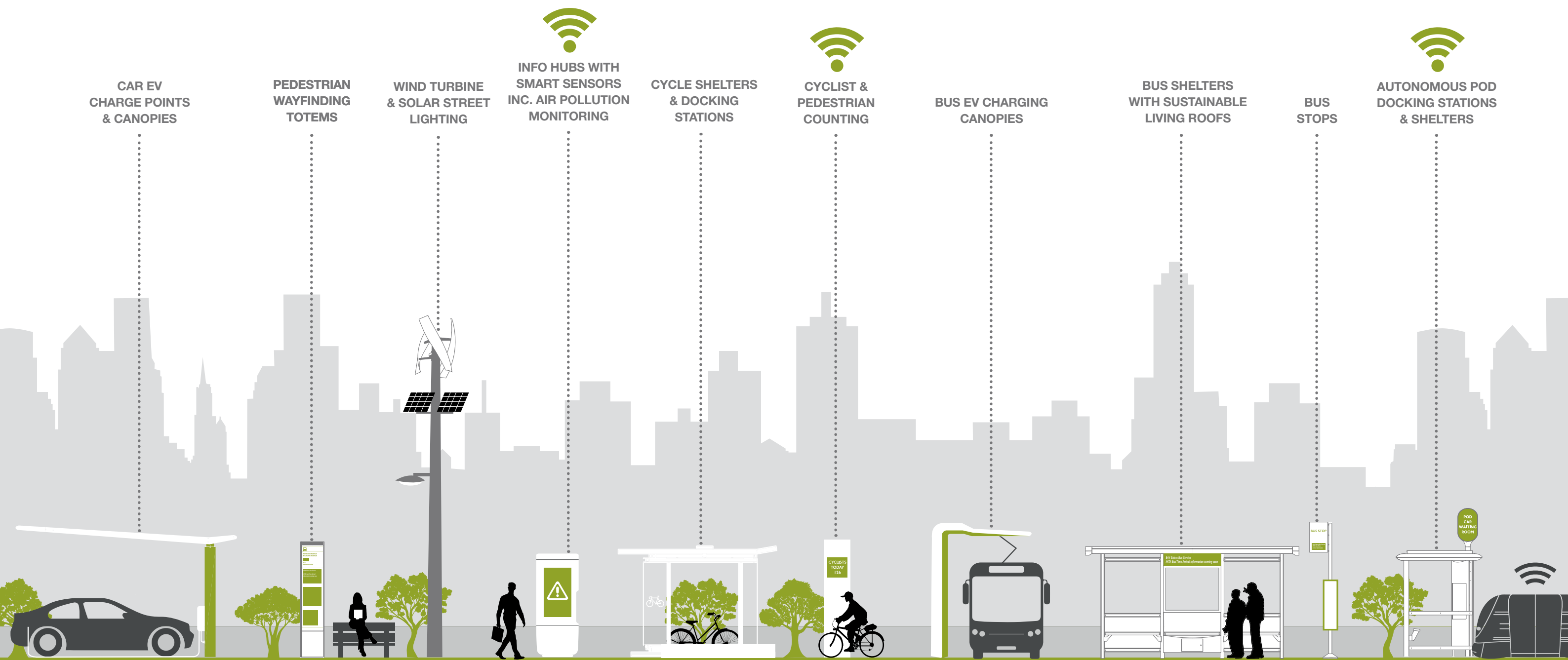


Key Benefits and Features of Trueform's Products:

- **Health** - Encourages walking, cycling and low carbon mobility - providing health benefits to all
- **Reduced Congestion** - Reduces reliance of other forms of transport
- **Environmental** - Reduces road traffic congestion, exhaust emissions and greenhouse gases
- **Air Quality** - Reduces air pollution and provides cleaner air
- **Safety** - Creates safe and welcoming environments by directing people to the right areas
- **Transport Links** - Enhances key routes in and around the city centre, promoting and linking public transport interchanges
- **Designs** - Range of contemporary, modern and historic designs available to suit your town or city
- **Essential products to enable cities to embrace the SmartCity and Intelligent Mobility transformation**
- **Interconnected** - Providing Wi-Fi connectivity - an essential Internet of Things platform
- **Device charging via USB ports Internet enabled**
- **Digital Advertising Platform** - providing valuable advertising revenue
- **Accessibility** - Making your town or city fully accessible to pedestrians, commuters and tourists
- **Promotion** - Quickly identifies routes, destinations and promotes your town or cities specific places of interest
- **Economy** - Boosts local business and the economy by increasing footfall and trade
- **ESG - Environmental, Social and Governance.** - Assist organisations achieve ESG - the three central factors in measuring sustainability and societal impact

Smart City Infrastructure

Smart Transport – Smart Mobility – Smart Streets



World leaders in public transit infrastructure

Bus • Rail • Bus Rapid Transit • Airports
Streetcar • Cycling • Pedestrian Wayfinding



Contact our sales office on 020 8561 4959, email us at sales@trueform.com or visit www.trueform.com for more information on any of our products

Why choose Trueform?

Sustainable mobility is the central basis for economic growth and city prosperity in our globalised world, both in urban centres of population and in less densely populated areas.

Trueform provide intelligent public transport and active travel solutions to meet this requirement.

Trueform blend specialist public transport design engineering and manufacturing skills with accessibility design, graphic design, signing, intelligent electronic transit systems, safety and statutory standards, system planning, technical specification, user analysis, installation and maintenance expertise, based on an in-depth knowledge of public transport operations and movement of people in our towns and cities.

Trueform believes transport systems and environments should be sustainable, welcoming, safe and easy to navigate. Transport systems should be highly visible, distinctive and easy to use, by everyone.

Trueform have a proven track record in the provision of integrated and coordinated active travel and public transport solutions that attract travellers and encourage modal shift by successfully transforming public transport and the mobility experience. This is based on a sound understanding of the traveller's requirements - both now and projected into the future.

Trueform focus their attention on the points on the transport network where passengers "join", "transfer" and "leave". These are key components to improve, if area wide public transport solutions are to be effective.

Trueform are a leading ESG company (Environmental, Social and Governance). Trueform's green street infrastructure products assist organisations achieve ESG - the three central factors in measuring sustainability and societal impact.

Trueform work with clients to transform cities, providing solutions that deliver a promising and sustainable future.

Contact our sales office on **020 8561 4959**, email us at **sales@trueform.com** or visit **www.trueform.com** for more information on any of our products

